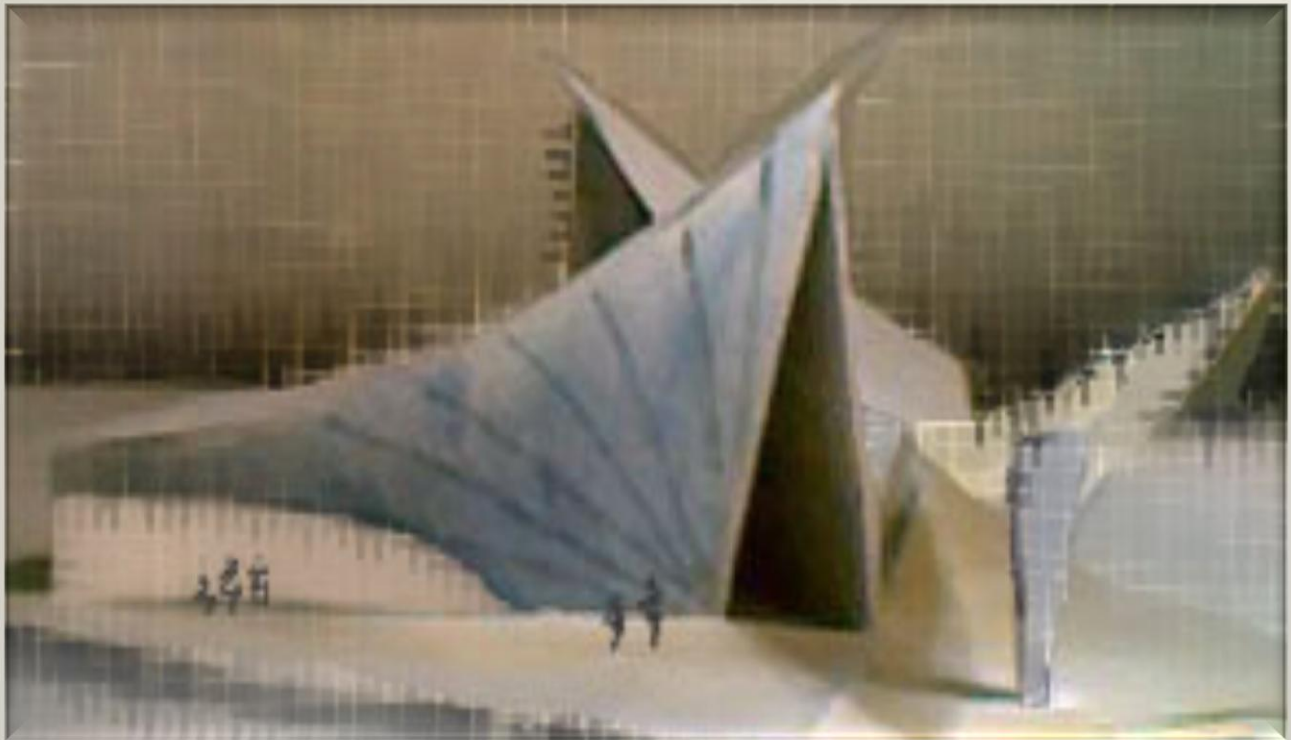




‘MANIFOLD WISDOM’

Center for Higher Learning

Mongolia



MANIFOLD WISDOM

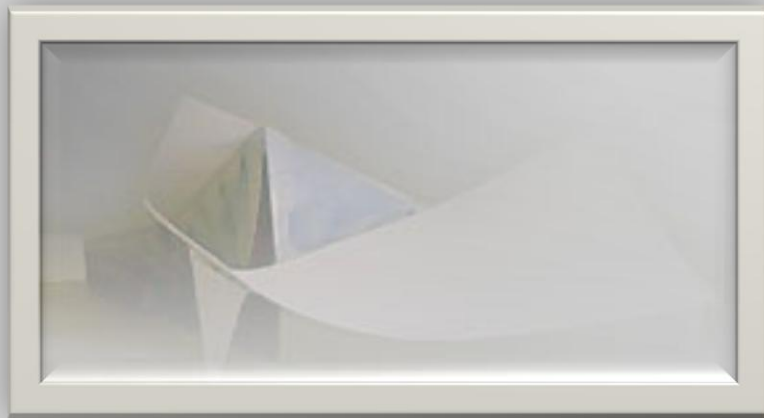
Center for Higher Learning: Mongolia: Entrance

To me, the very least of all the holy ones, this grace was given, to preach to the Gentiles the inscrutable riches of Christ,

And to bring to light [for all] what is the plan of the mystery hidden from ages past in God who created all things,

So that the MANIFOLD WISDOM of God might now be made known through the church to the principalities and authorities in the heavens.

Ephesians 3:8-10

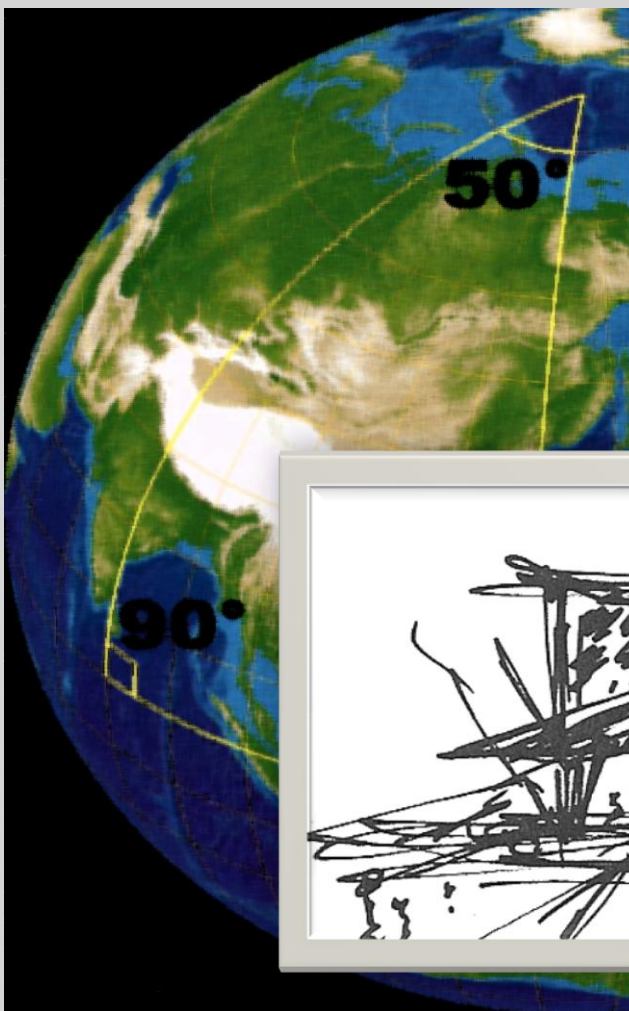


Manifold Wisdom Center

Concept

The surface of a sphere can be represented by a collection of two-dimensional maps; therefore, the surface of a sphere is a two-dimensional manifold. The Manifold Wisdom Center is a place on earth to unfold the mysteries of God. Manifold Wisdom Center stands between two worlds.

The concept of a manifold is central to many parts of [geometry](#) and modern [mathematical physics](#) because they allow more complicated structures to be expressed and understood in terms of the relatively well-understood properties of simpler spaces.





MANIFOLD WISDOM

Center for Higher Learning

WORSHIP/SACRED SPACE

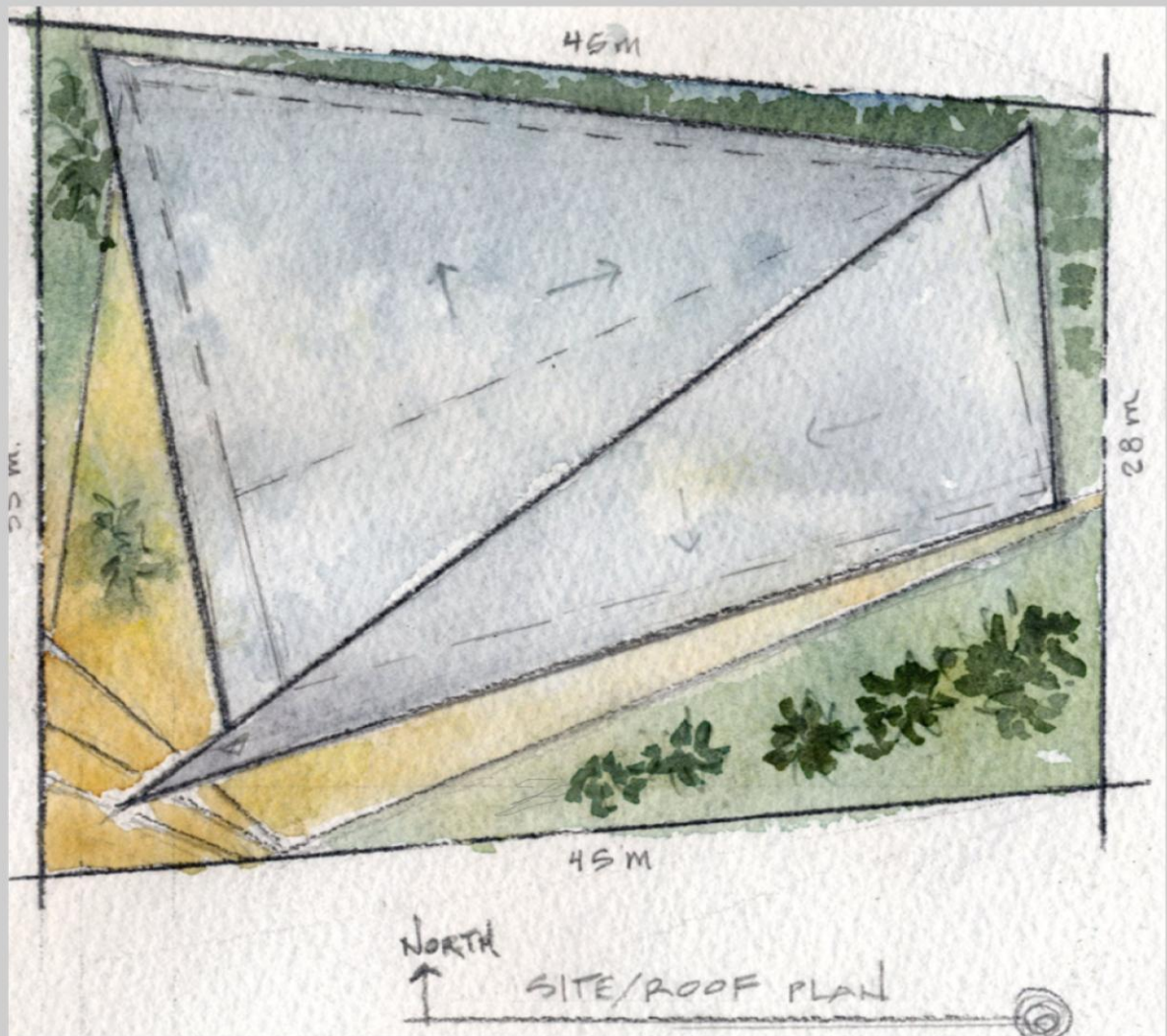
SCHOOL/LEARNING

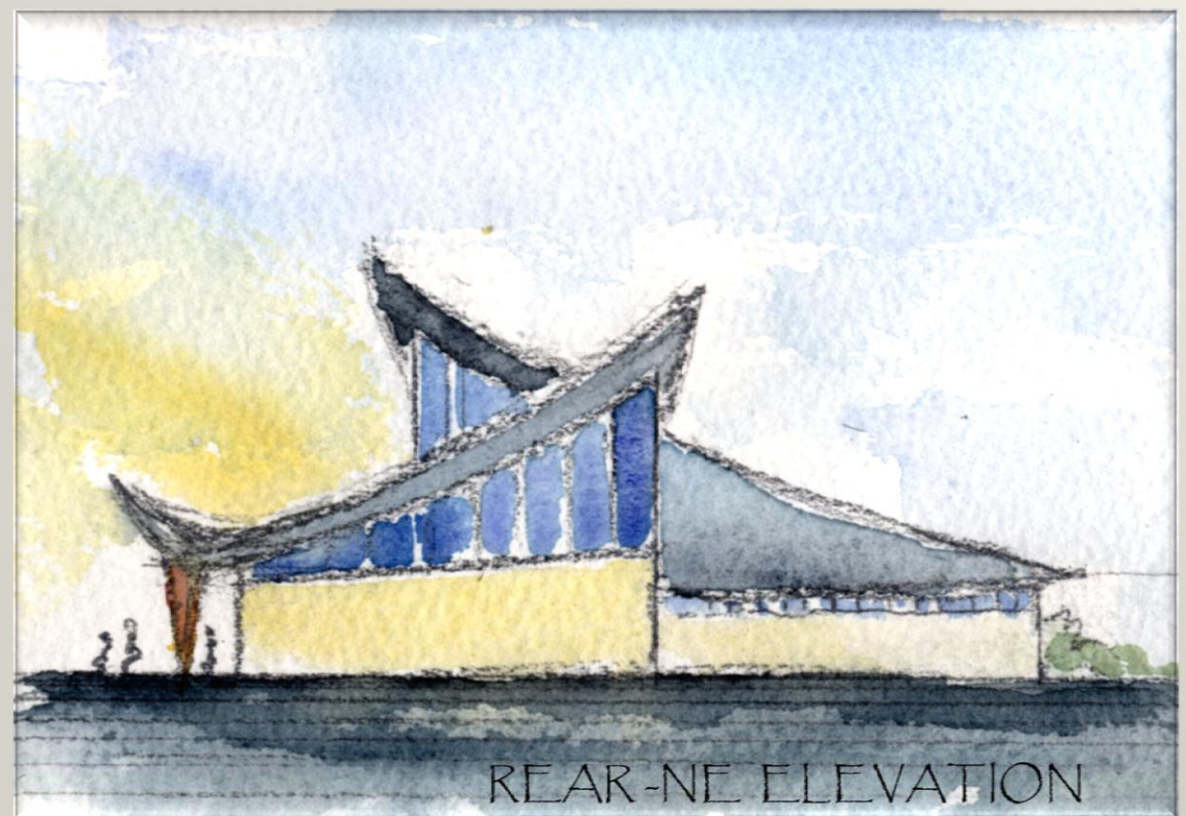
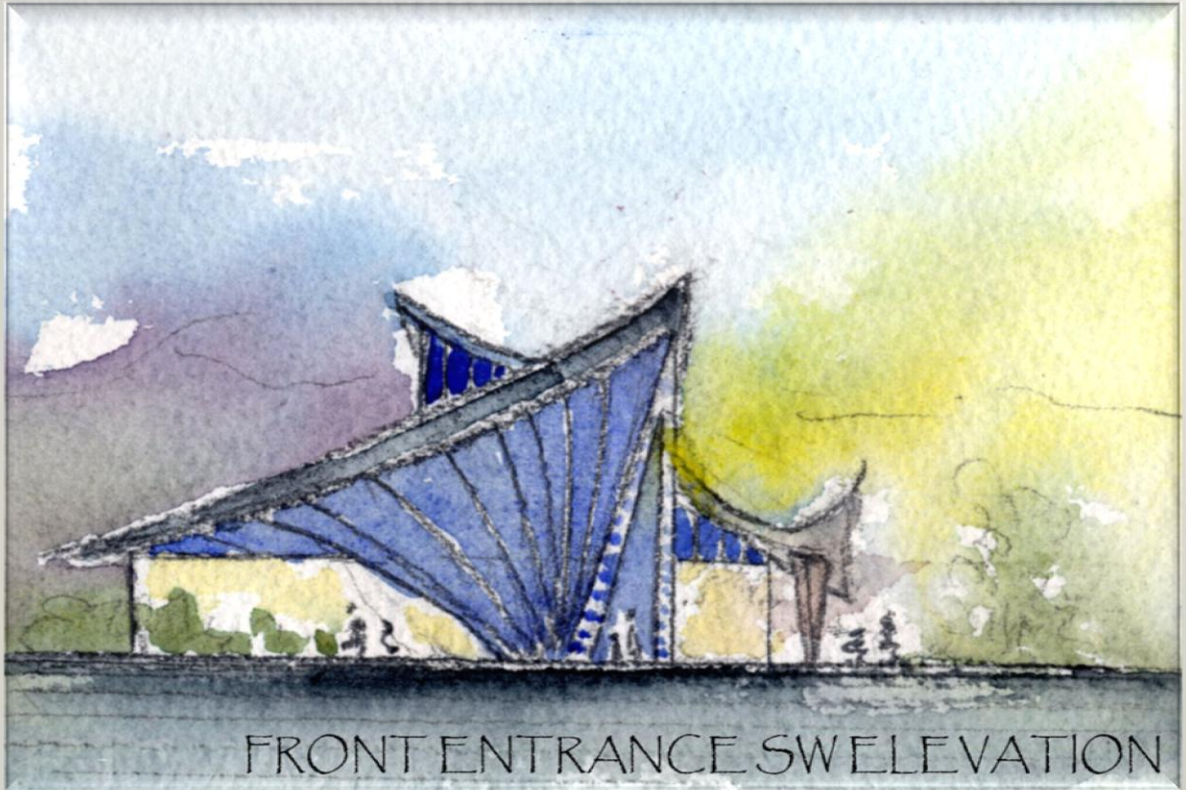
SUSTAINABLE

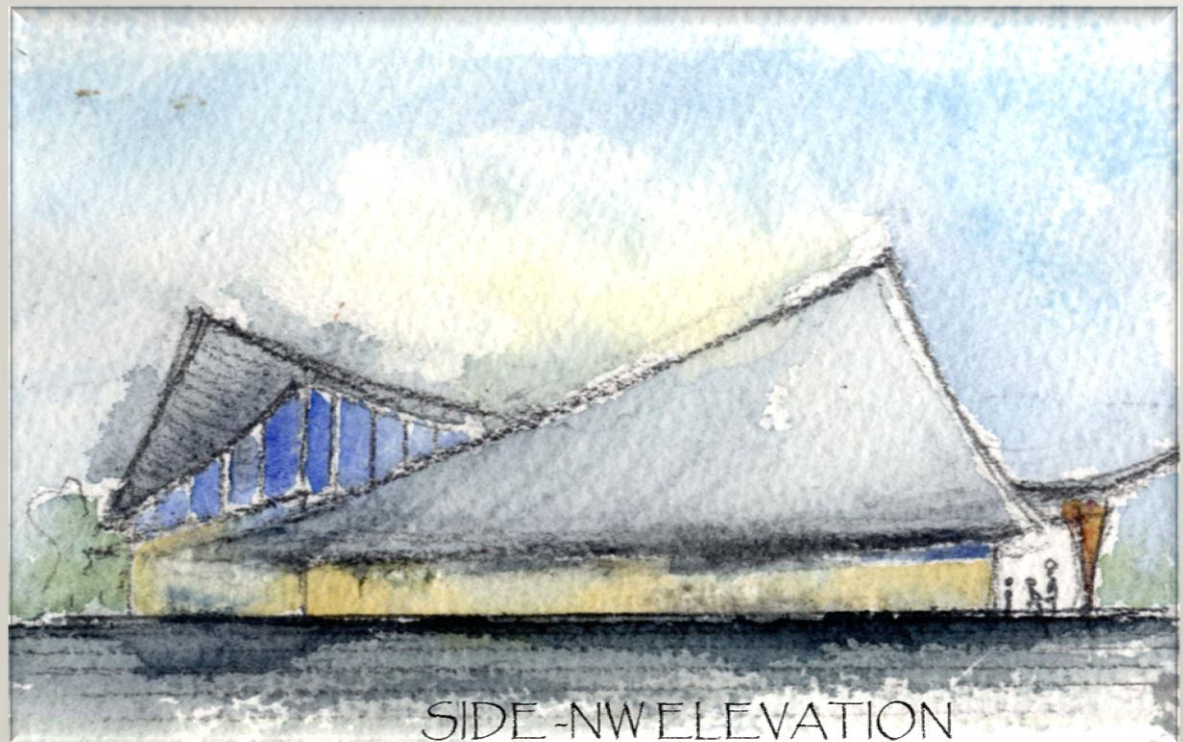
PASSIVE SOLAR/SOLAR

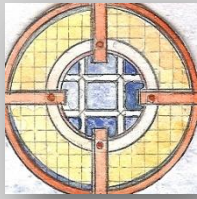
DESIGNED FOR MAXIMUM USE OF LIGHT

BUILDING ELEMENTS/DESIGN MODIFIED ACCORDING TO SITE,
SCOPE, MATERIALS AND BUDGET





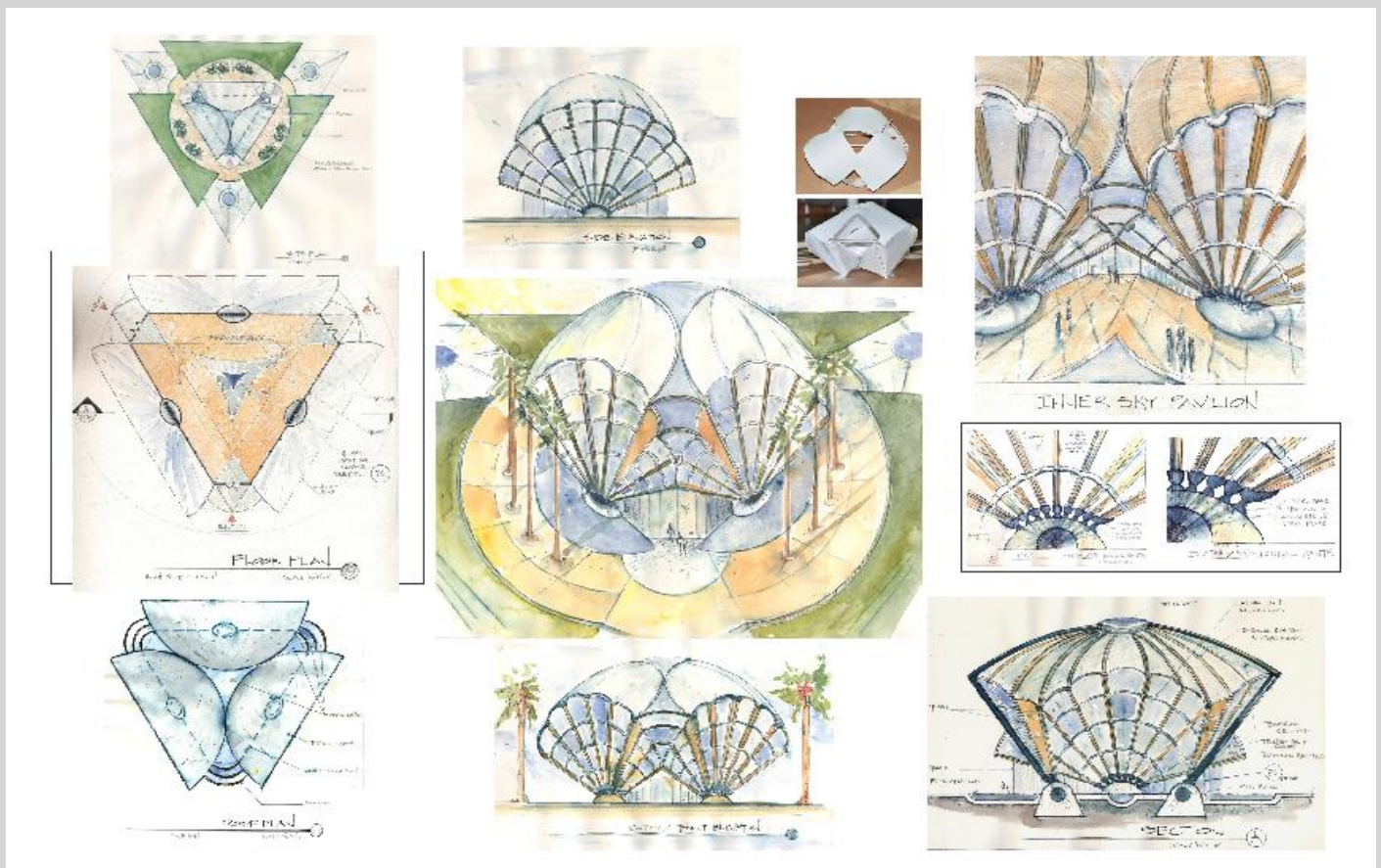




MATISSE STUDIOS

ARCHITECTURE

Inner Sky Bamboo Pavillion



Lauri A. Matisse Architect

13150 Maxella Ave. #14, Marina Del Rey, Ca. 90292 (310) 751-6592

lmatisse@matissestudios.com

MATISSESTUDIOS.COM

Lauri A. Matisse: Designer/Artist/Architect

Mission Statement: Visionary Architect offers art, architecture and design skills to provide successful projects that meet the clients scope for the project within the budget and time allowed; at the same time, innovating the highest optimal use of sustainable energy elements in the design, while implementing the most efficient and aesthetically pleasing architectural design. These, I believe can be achieved with a team that includes an architect with a strong sense of design, who has experience with other top designers, has a good rapport with the clients and consultants, as well as one who maintains a wide base of knowledge by knowing the various aspects of the entire project and is current with new technologies and sustainable design elements. Lauri Matisse brings forth 20 years of experience as an architect and fine artist.

